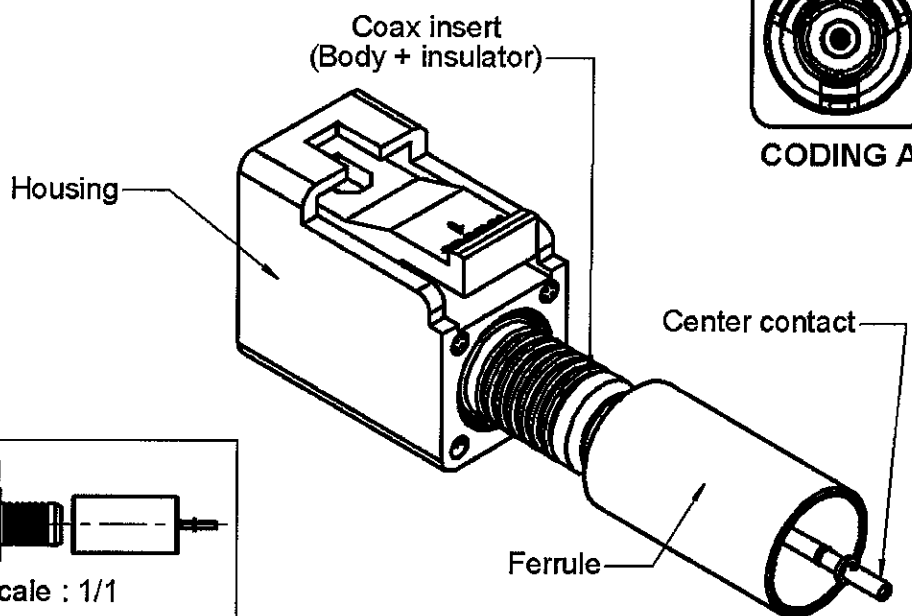
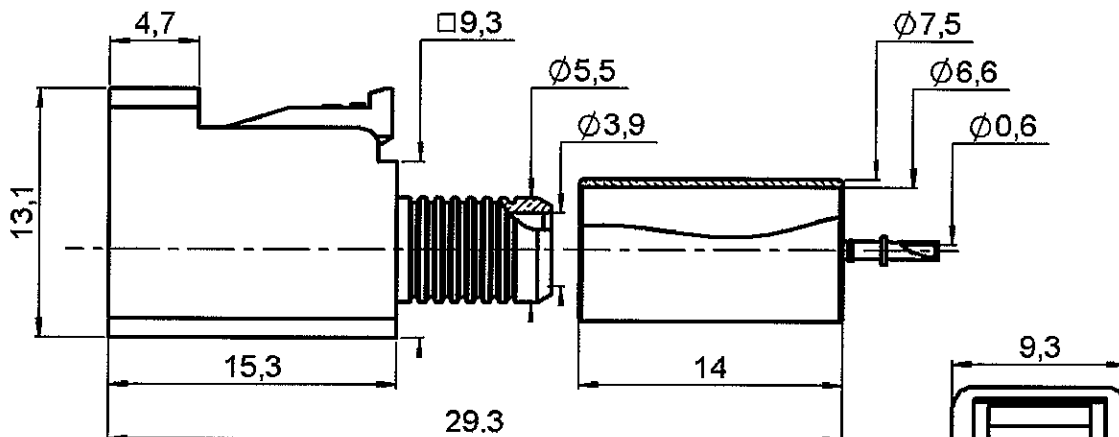


STRAIGHT FEMALE PLUG CRIMP TYPE

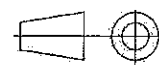
CABLE 6/125 S PACK500

R197.114.A15

Series : SMB
CARLOCK



All dimensions are in mm.



COMPONENTS	MATERIALS	PLATINGS (µm)
BODY	BRONZE	NICKEL 2
CENTER CONTACT	BRONZE	GOLD 0.8 OVER NICKEL 2
OUTER CONTACT	-	
INSULATOR	PTFE	
GASKET	-	
OTHERS PARTS	BRASS	NICKEL 2
HOUSING	PA6.6 GF13 (POLYAMIDE)	UL CLASSIFICATION COLOR
		UL 94 V-2 BLACK

Issue : 0525 C

In the effort to improve our products, we reserve the right to make changes judged to be necessary.



STRAIGHT FEMALE PLUG CRIMP TYPE

R197.114.A15

CABLE 6/125 S PACK500

Series : **SMB**
CARLOCK

PACKAGING

Standard	Unit	Other
500	'W' option	Contact us

SPECIFICATION

SAE/USCAR-17 & SAE/USCAR-18

CABLE ASSEMBLY

Stripping	a	b	c	d	e	f
mm	2.50	7.50	10.0	0.00	0.00	0.00

ELECTRICAL CHARACTERISTICS

Impedance		50 Ω
Frequency		0-4 GHz
VSWR	NA +	0.000 x F(GHz) Maxi
Insertion loss		NA √F(GHz) dB Maxi
RF leakage		-45 - F(GHz)) dB Maxi
Voltage rating		335 Veff Maxi
Dielectric withstanding voltage		1000 Veff mini
Insulation resistance		1000 MΩ mini

Assembly instruction : **Page 3**

Recommended cable(s)

RG62/U modified

Characteristics indicated on this data sheet are those that can be achieved with the highest performance cable. Intrinsic limitations of the cable may diminish the performance of the assembly

Cable retention

- pull off **150** N mini
- torque **NA** N.cm

MECHANICAL CHARACTERISTICS

Center contact retention		
Axial force – Mating end		10 N mini
Axial force – Opposite end		10 N mini
Torque		NA N.cm mini

TOOLING

Part Number	Description	Hexagon
.	.	.
R282.293.000	CRIMPING TOOL	
R282.235.013	CRIMPING DIES	Hex 6.48
R282.281.000	CRIMPING TOOL	2x4pts 3pos
R282.967.034	POSITIONER FOR TOOL R282 281	
R282.223.000	CRIMPING TOOL	Hex 6.48

Recommended torque		
Mating		NA N.cm
Panel nut		NA N.cm
Clamp nut		NA N.cm
A/F clamp nut		0.000 mm

Mating life		100 Cycles mini
Weight		4.500 g

ENVIRONMENTAL

Operating temperature		-40/+110* °C
Hermetic seal		NA Atm.cm3/s
Panel leakage		NA

OTHERS CHARACTERISTICS

* Depends on the cable used

Issue : **0525 C**

In the effort to improve our products, we reserve the right to make changes judged to be necessary.



STRAIGHT FEMALE PLUG CRIMP TYPE

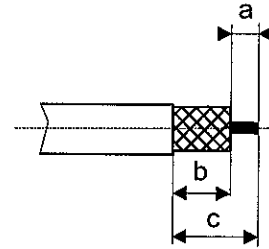
CABLE 6/125 S PACK500

R197.114.A15

Series : SMB
CARLOCK

Recommended mounting procedure for RG62/U modified cable

STRIPPING DIMENSIONS



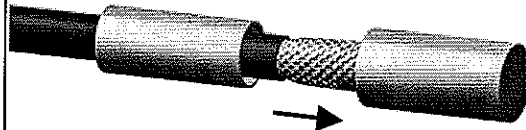
1

- Slide the ferrule onto the cable.
- Strip the cable.



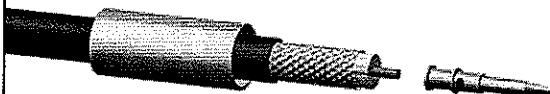
4

- Slide the cable into the body until it bottoms against insulator.



2

- Slide the centre contact on until it bottoms against the cable dielectric
- Crimp the centre contact with crimping tool R282.281.000 (3 position) (2x4pts) with positioner R282.967.034.



5

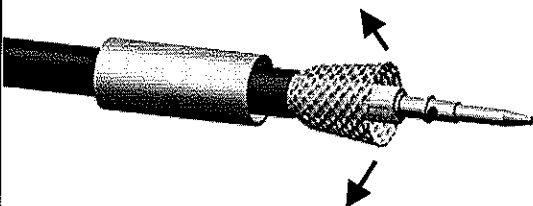
- Slide the ferrule over the braid.
- Crimp the ferrule (Hex 6.48) as shown on this picture with crimping tool R282.223.000 or crimping tool R282.293.000 (M22520/5-01) + dies R282.235.013 (M22520/5-13).

After crimping



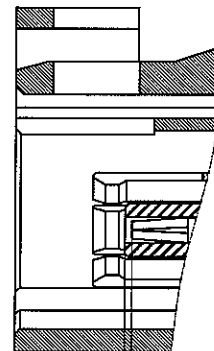
3

Fan the braid.



6

- Check the position of the center contact between the top of the insulator and the top of the center contact : 0.10 ± 0.10 .



$0.10 \pm 0.10\text{mm}$
(.00393 ± .00393)

Issue : 0525 C

In the effort to improve our products, we reserve the right to make changes judged to be necessary.



RADIALL®